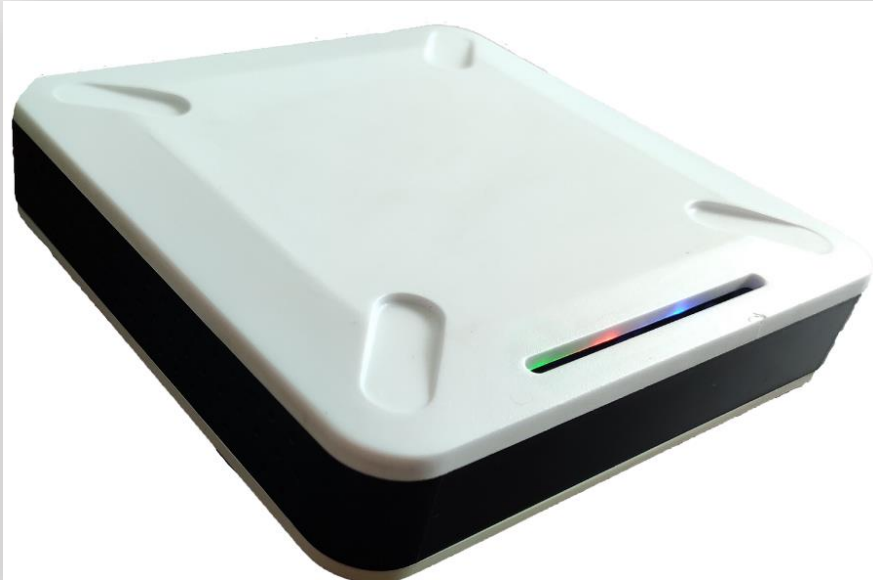


# BLE - Wi-Fi GATEWAY



Technical  
Specification  
COMTUSTEC INDIA (P) LTD

## Overview

BLE - Wi-Fi Gateway is a Bluetooth 4.0 low energy (BLE) to Wi-Fi connectivity gateway. The gateway collects the data from BLE Beacons and then sends to the remote cloud server by HTTP/HTTPS/MQTT. Posting interval, Beacon reading Range, posting API, configuration API, gateway configuration, FOTA shall be done through remote server or through local webserver.

## General

|                     |  |
|---------------------|--|
| Power source        | 230VAC (Maximum)                           |
| Current consumption | AC - 10mA (Minimum)<br>AC - 55mA (Maximum) |
| Temperature         | -20° to 65°C                               |
| Firmware Update     | Firmware over the Air (FOTA)               |

## WIFI

|                     |   |
|---------------------|---|
| WIFI Frequency      | 2.4 GHz - 2.5GHz (2400M - 2483.5)             |
| WIFI Type           | IEEE802.11 b/g/n Support                      |
| WIFI Security       | WPA / WPA2                                    |
| WIFI TX Power       | 20.5 dBm @ 1DSSS and 11 CCK 15.0dBm @ 54 OFDM |
| WIFI RX Sensitivity | -97.5 dBm @ 1DSSS -88.5dBm @ 11 CCK           |
| WIFI Antenna        | 0 dBm Single PCB Antenna, Omni Directional    |

## BLE (Bluetooth Low Energy)

|                     |       |
|---------------------|-------|
| Bluetooth Type      | 4.0   |
| Bluetooth Data Rate | 1Mbps |

Bluetooth Sensitivity -96 dBm

Bluetooth Antenna 2400 ~ 2483.5 MHz / BW 83.5 MHz / Linear Polarization / Gain 7dBi / VSWR < 2 / 50 Ohms / External Omni directional Antenna/ Conn RP-SMA Male.

#### Battery

Battery 4.2V / 1000mAh

Power Backup 6 Hours

#### Mechanical

Size 120 x 120 x 28mm

Net weight 250 Grams

#### Warranty

Warranty 1 Year (\*only manufacturing defects)

#### Applications

iBeacon / Eddystone / other BLE tag receiver

Asset tracking

Advertisement promotion

Indoor location and position

Industrial automation Applications.