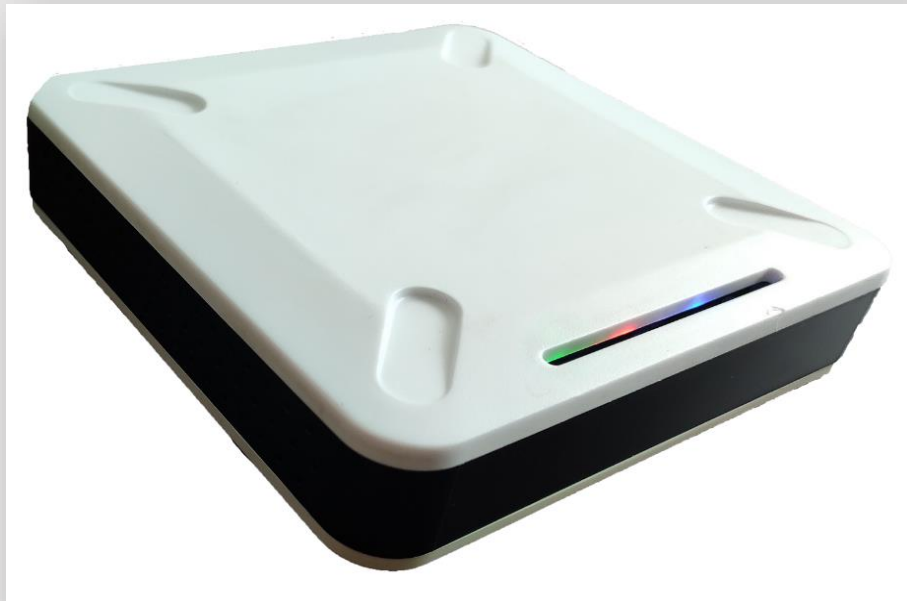


BLE – GPRS & GPS GATEWAY



Technical
Specification
COMTUSTEC INDIA (P) LTD

Overview

BLE – GPRS & GPS Gateway is a Bluetooth 4.0 low energy (BLE) to GPRS & GPS connectivity gateway. The gateway collects the data from BLE Beacon and then sends remote cloud server by HTTP/HTTPS/MQTT. Posting interval, Beacon reading Range, posting API, configuration API, gateway configuration, FOTA shall be done through remote server or through local webserver.

General

Power source	12VDC to 18VDC
Ideal Current	0.2A
Peak Current	0.7A
Temperature	-20° to 65°C
Firmware Update	Firmware over the Air (FOTA)

GPRS and GSM Module

Frequency Band (Quad Band)	850/ 900/ 1800/ 1900MHz
DATA	Max. 85.6kbps (Downlink) Max. 85.6kbps (Uplink)
GPS L1 Band Receiver	Channel: 33 (Tracking)/ 99 (Acquisition)/ 210(PRN)
GLONASS L2 Band Receiver	C/A Code SBAS: WAAS, EGNOS, MSAS, GAGAN
Output Power	Class 4 (2W @850/ 900MHz) Class 1 (1W @1800/ 1900MHz)

Bluetooth Low Energy (BLE)

Bluetooth Type	4.0
Bluetooth Data Rate	1Mbps
Bluetooth Sensitivity	-96 dBm

Bluetooth Antenna 2400 ~ 2483.5 MHz / BW 83.5 MHz / Linear Polarization / Gain 7dBi / VSWR < 2 / 50 Ohms / External Omni directional Antenna/ Conn RP-SMA Male.

Mechanical

Size 120 x 120 x 28mm

Net weight 250 Grams

Warranty

Warranty 1 Year (*only manufacturing defects)

Applications

iBeacon / Eddystone / other BLE tag receiver

Asset tracking

Advertisement promotion

Indoor location and position

Industrial automation Applications.

Live GPS Tracking for Vehicle.